



IMPORTANT SAFETY INSTRUCTIONS

DANGER - RISK OF SHOCK-DISCONNECT POWER BEFORE INSTALLATION.

The retrofit kits including LED lamp, instruction, field-applied label.

The LEDT8 U-Bend intended to retrofit type Non-IC or type IC recessed mounted fluorescent luminaires with diffuser that use straight tubular. The products intended to be used in dry and damp locations.

THIS PRODUCT MUST BE INSTALLED IN ACCORDANCE WITH THE APPLICABLE INSTALLATION CODE BY A PERSON FAMILIAR WITH THE CONSTRUCTION AND OPERATION OF THE PRODUCT AND THE HAZARDS INVOLVED.

WARNING - Risk of fire or electric shock. The electrical rating of these products are 120-277Vac, the installer must determine whether they have 120-277Vac at the luminaire before installation.

WARNING - Risk of fire or electric shock. LED Retrofit Kit installation requires knowledge of luminaires electrical systems. If not qualified, do not attempt installation. Contact a qualified electrician.

WARNING - Risk of fire or electric shock. Install this kit only in the luminaires that has the construction features and dimensions shown in the photographs and/or drawings.

WARNING - To prevent wiring damage or abrasion, do not expose wiring to edges of sheet metal or other sharp objects.

Do not make or alter any open holes in an enclosure of wiring or electrical components during kit installation.

WARNING: To avoid potential fire or shock hazard, do not use this retrofit kit in luminaires employing shunted bi-pin lampholders. Note: Shunted lamp holders are found only in fluorescent luminaires with Instant-Start ballasts.

Instant-start ballasts can be identified by the words "Instant Start" or "I.S." marked on the ballast. This designation may be in the form of a statement pertaining to the ballast itself, or may be combined with the marking for the lamps with which the ballast is intended to be used, for example F40T12/IS. For more information, contact the LED luminaire retrofit kit manufacturer.

Installers should not disconnect existing wires from lamp holder terminals to make new connections at lamp holder terminals. Instead installers should cut existing lamp holder leads away from the lamp holder and make new electrical connections to lamp holder lead wires by employing applicable connectors.

DO NOT USE WITH DIMMERS.

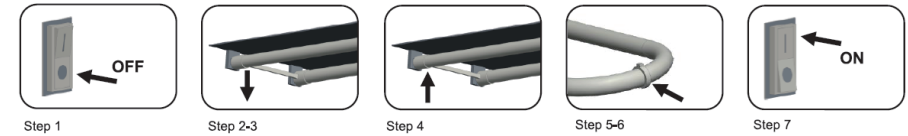
RISK OF ELECTRIC SHOCK – USE IN DRY AND DAMP LOCATION ONLY

THIS DEVICE IS NOT INTENDED FOR USE WITH EMERGENCY EXITS

This Lamp, is compatible to IS (instant-start) Electronic Ballast only; and also can work with line voltage AC 120-277V directly.

Direct replacement Electronic Ballast:

INSTRUCTIONS



STEP 1: Switch-off power to the luminaire.

STEP 2: Remove diffuser (if provided).

STEP 3: Remove the existing fluorescent lamps from the luminaire.

STEP 4: Install the LED T8 U-Bend replacement lamp.

STEP 5: Ensuring pins are firmly seated in the lampholders.

STEP 6: Replace diffuser (if removed in step 2).

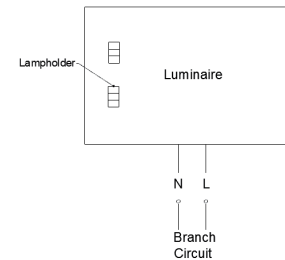
STEP 7: Switch on power to the luminaire.

Retrofit fluorescent luminaire with electric ballast:

STEP 1: Shut off power before work.

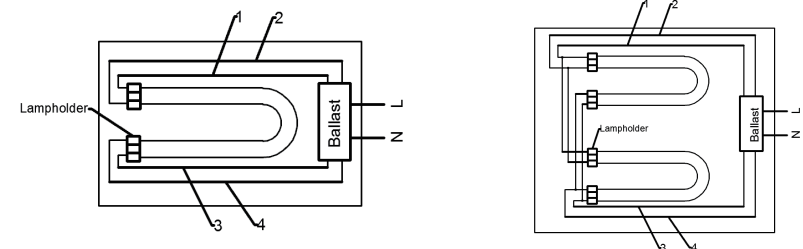
STEP 2: Remove existing fluorescent lamp(s), diffuser (if applicable) and open the ballast cover.

STEP 3: Disconnect luminaire supply wirings L and N to branch circuit as shown in Fig.1



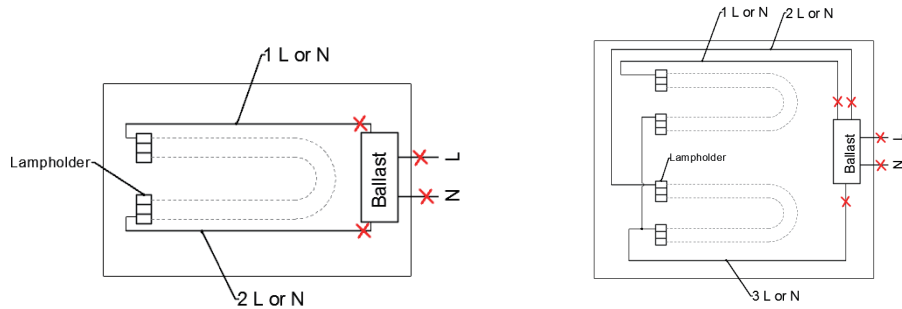
STEP 4: Original circuit as shown in Fig.2. Cut lampholder leads "1, 2, 3, 4, L, N", then check whether the lampholder is shunted.

Fig.2.



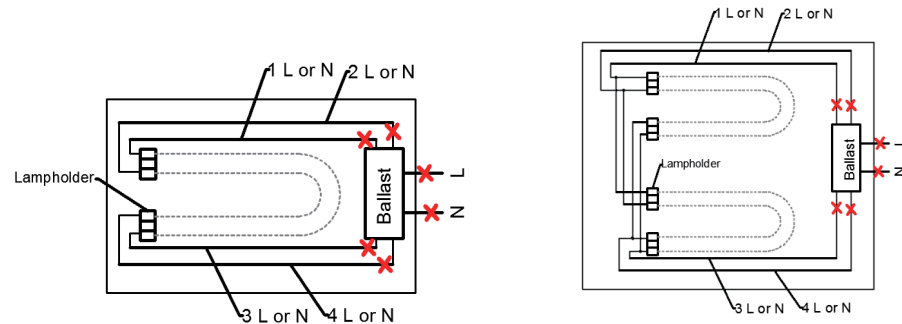
STEP 5: If the lampholder is not shunted, go to Step 6. If the lampholder is shunted, connect one lead from each lampholder to branch circuit as follows, “Leads 3 and 4” connected to L; “Leads 1 and 2” connected to N as shown in Fig. 2A. Cut as far away from the lampholders to allow for longer lengths of wire at both lampholders. Note: Ballast must be retained in place.

Fig.2A



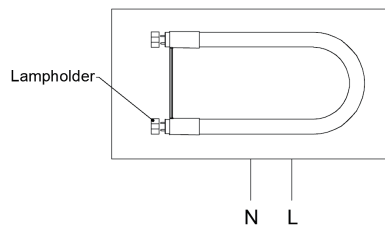
STEP 6: Connect any two of the leads to “L” and “N” as shown in Fig. 2B. Cut as far away from the lampholders to allow for longer lengths of wire at both lampholders. Note: Ballast must be retained in place

Fig.2B



STEP 7: Attach the field applied label to the luminaire. Install ballast cover and diffuser(if applicable) back on Luminaire, and T8 LED tube as shown in Fig. 3.

Fig.3



STEP 8: Turn on the AC power source, LED Tube will light.

Retrofit fluorescent luminaire with separate starter and magnetic ballast.

Repeat Steps 1 to 3.

STEP4: Original circuit as shown in Fig.3. Cut lampholder leads “1, 2, 3, 4”, Connect any two of the leads to “L” and “N” as shown in Fig. 4A. Cut as far away from the lampholders to allow for longer lengths of wire at both lampholders. Note: Starter and ballast must be retained in place.

Fig.4

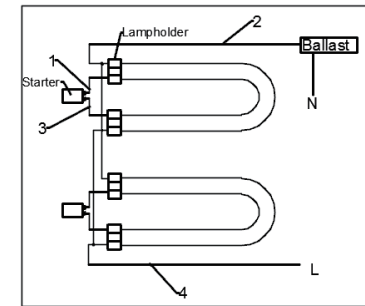
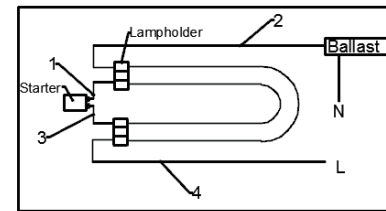
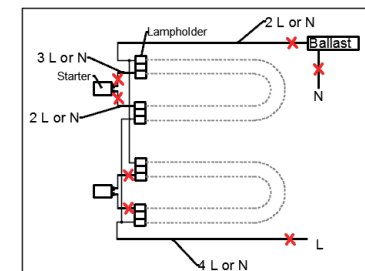
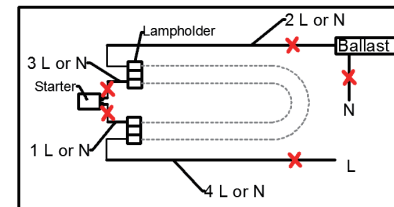


Fig.4A



Repeat Steps 7 and 8.

Service Contact:

ESPEN TECHNOLOGY

Tel:562-529-2938

Email:info@espentech.com

http://espentech.com